



COMMUNITY NEUROLOGIC CENTER

2401 Kaneville Rd.
Suite 8
Geneva, IL 60134
Tel. 630-208-7735
Fax 630-208-6956
www.neuro-clinic.com

COMPREHENSIVE NEUROLOGY, SLEEP DISORDERS AND EPILEPSY CLINIC

...There is more to sleep disorders than sleep apnea. These are distinct type of Neurologic diseases frequently resulting in diminished quality of life of our Patients ...



Here at **Community Neurologic Center**, we have been successfully treating patients with a variety of neurological disorders for the past eight years. Recently, we have opened a brand new, state of the art **SLEEP DISORDERS CLINIC**. With the help of our sleep disorder specialist, Dr. John R. Wilson, our comprehensive **SLEEP DISORDERS AND EPILEPSY CLINIC** provides the latest diagnostic evaluations and testing for patients with neurological diseases. Dr. John R. Wilson is a Board Certified Neurologist and is Board Certified by American Board of Sleep Medicine. He is bringing his vast expertise to help patients with excessive daytime tiredness, sleep apneas, leg movement disorders, narcolepsy, insomnia, epilepsy and chronic headaches.

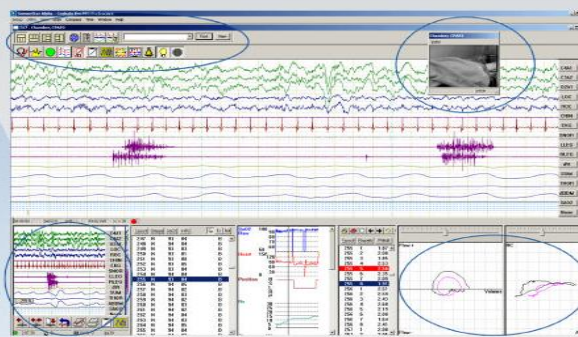
After all, sleep science is part of neurology. Our neurologists, Dr. Steven V. Lekah and Dr. John R. Wilson, provide a multidisciplinary approach to your most challenging patients with disorders of wakefulness and sleep.

The **EPILEPSY CLINIC** is an extension of our multidisciplinary approach to treating patients with recurring seizures. Our brand new, state of the art EEG facility, is able to provide even prolonged monitoring up to 24 hours for certain patients. Our registered technicians have a lot of experience in performing sleep and EEG testing even for pediatric patients, as young as 3 years old.



Toolbars allow Technicians to Quickly Perform Actions with a Single Click

Enlarge Epoch View to Enjoy Full Editing Capabilities During Data Collection



Digital Video Window

Real Time Flow Volume Loops to Assist in CPAP Titrations and detections of subtle airflow limitations

Our registered technicians use state of the art monitoring equipment, which allows them live monitoring of patient's condition. Data Acquisition Program, used by our **SLEEP DISORDERS AND EPILEPSY CLINIC**, combines the "gold standard" quality of traditional analog recording devices with the innovations afforded by advances in digital technology.

Please feel free to contact me directly if you have any questions, comments, problems or if you need any additional information.

We can schedule your patients for polysomnography and EEG testing within a week after your order. The results of the test will be available within 5 days – which is the fastest turnaround time in the area. Most importantly, your patient will benefit from our vast expertise.

Sincerely,

Dr. Steven V. Lekah.